



Child Care Survey Report

Prepared by



April 2006

Report Overview

This report presents findings from a survey assessing the child care needs of clients at PROTOTYPE's Women's Center. Findings are presented either as percentages or measures of central tendency, or in both forms. The later is comprised of the *mean*, and *standard deviation*:

- *Mean* (M) – the arithmetic average of grouped data. For example, determining the “average” age of respondents' children, we would report the mean by adding up all of the children's ages and divide by the number of children.

- *Standard Deviations* (SD) are used to account for the relative dispersion of scores from the mean. The lower the standard deviation, the closer individual scores are to the mean. For example, if the *mean* age of respondents' children was 3.41 years of age with a standard deviation of 0.33 years, we would state that most of the ages of the children were similar to the mean. However, if the standard deviation was 3.23, with a mean of 3.41 years, we would state that the age ranges of the children were substantially varied from newborns to six or seven year olds.

The vast majority (87.9%) of respondents reported that their current living arrangement was something *other*¹ than an apartment or house setting (N=58). The percentage of respondents by type of living arrangement is reported in Figure 1 below.

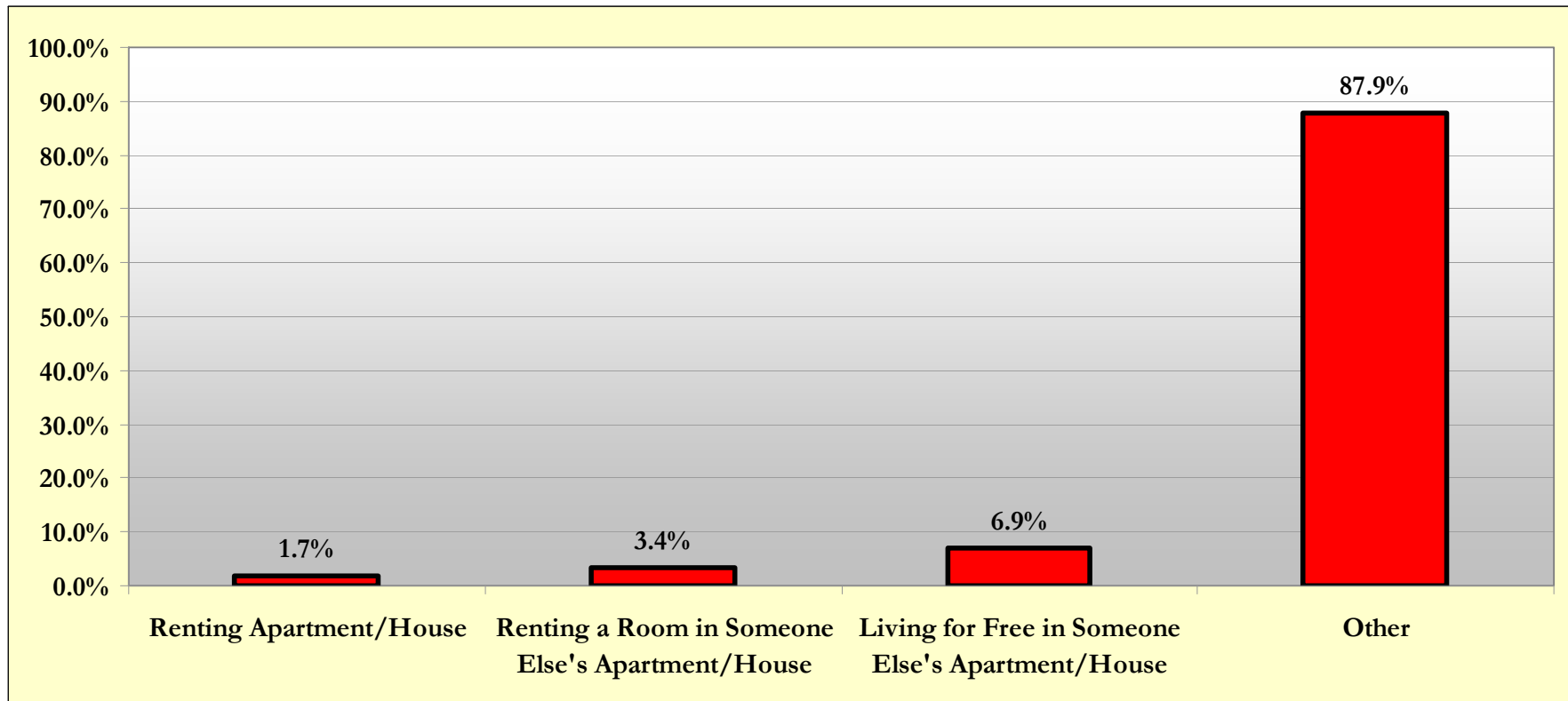


Figure 1: Living Arrangement Among Respondents (N=58)

¹ Of the respondents that indicated an *Other* response in regard to their current living arrangement, 92.2 percent reported their status with Prototypes as at the Residential/Women's Center.

Slightly less than 90 percent (88.3%) of respondents reported their current status with PROTOTYPES as at the *Residential/Women's Center*, with the remaining 11.5 percent reporting their status as being *outpatient* (N=60). Three-quarters (74.9%) of respondents reported that had been receiving services at PROTOTYPES for *six months or less* (based on N=60). The distribution of respondents by the range of time they had been receiving services is presented in Figure 2.

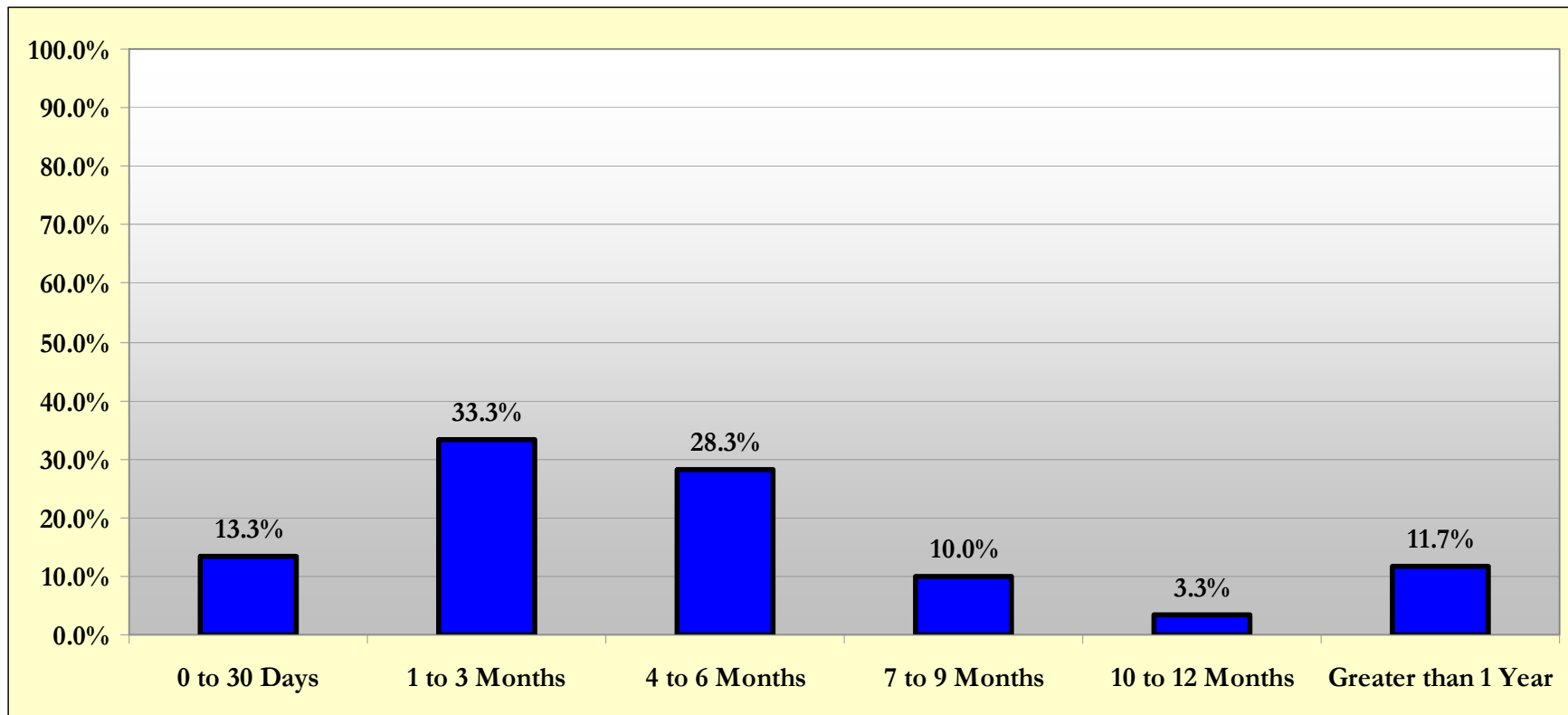


Figure 2: Range of Time Receiving Services at PROTOTYPES (N=60)

All but one of the respondents (98.3%) reported that they had at least one child less than 18 years of age (N=60). Of the respondents that reported having at least one child less than 18 years age, 70.2 percent reported that at least one of these children lived with them (N=57²). The mean number of children living with respondents that reported having at least one child less than 18 years of age living with them was 1.53 (SD=.68), with a range from one (1) to four (4) – from an N=40. The percentage of respondents by the number of children less than 18 years of age living with them is presented in Figure 3.

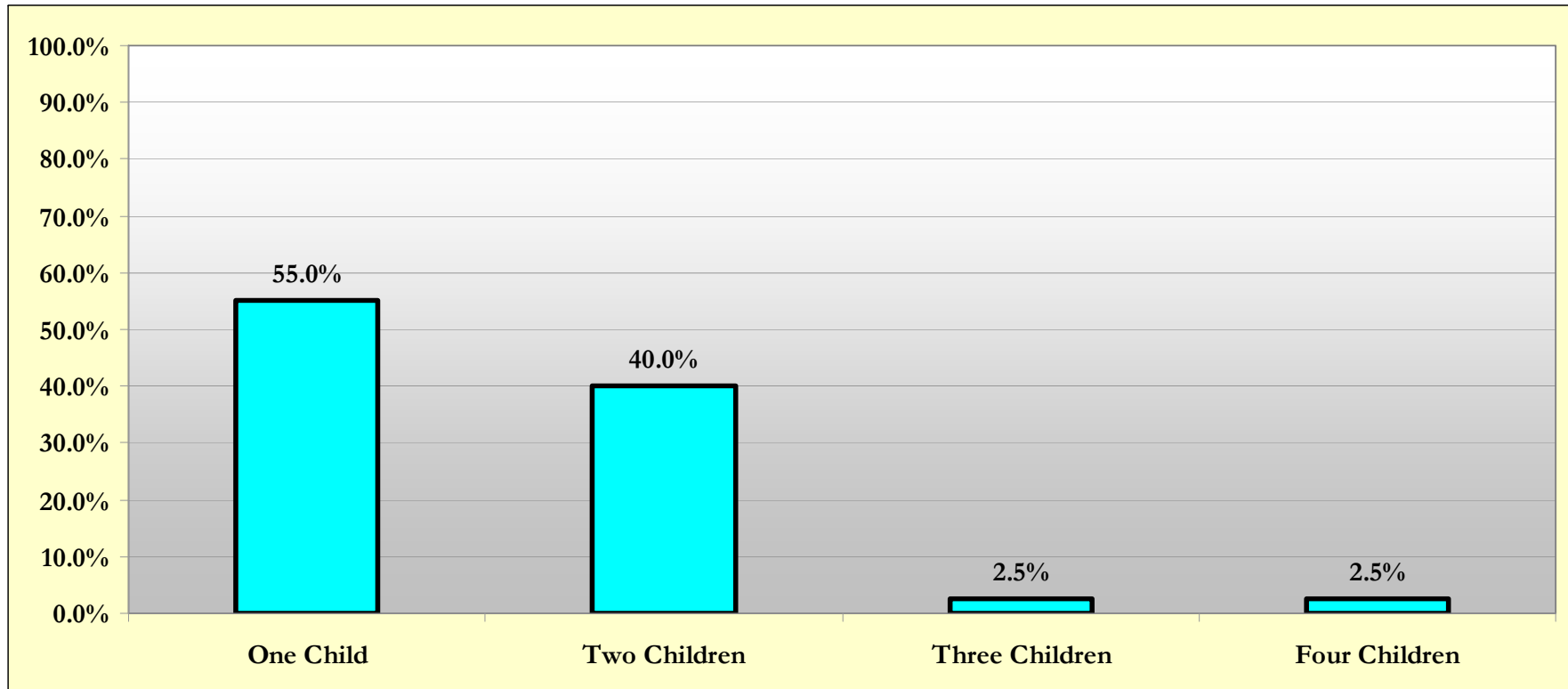


Figure 3: Number of Children Less than 18 Years of Age Living with Respondents (N=40)

² There was missing data for two (2) of the 59 respondents.

The mean age of the 61 children living with the 40 respondents that reported at least one child living with them was 3.52 years (SD=3.42), with a range from one (1) to 16 years. The percentage of children by age ranges is presented in Figure 4.

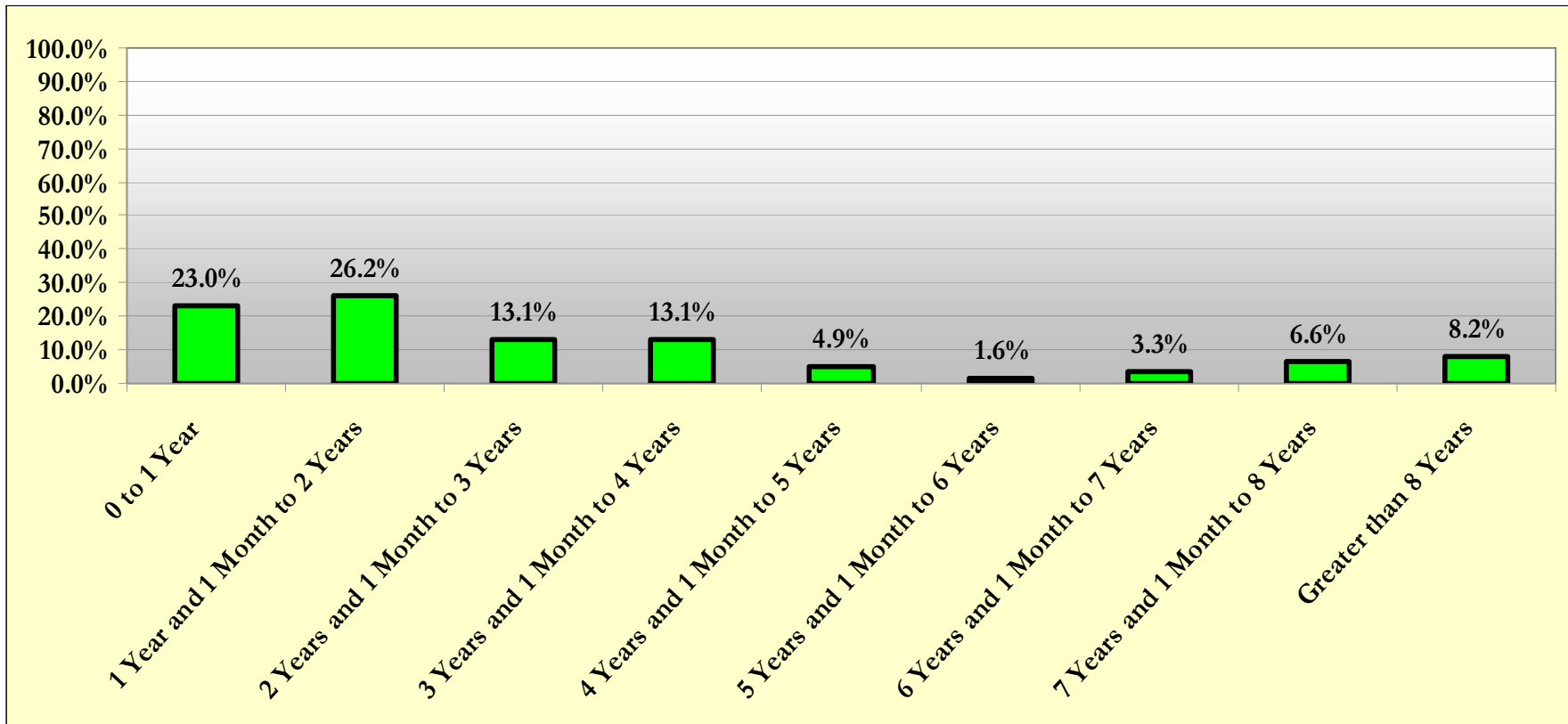


Figure 4: Age Range of Children Living with Respondents (N=61)

Two-thirds (66.7%) of respondents that reported having at least one child less than 18 years of age living with them indicated they had at least one child that was in child care at the time of completing the survey (N=39). The reported mean number of the children that were in child care was 1.23 children (SD=0.43), with 76.9 percent indicating only one child in child care, and 23.1 percent reporting two children in child care (based on N=26).

The mean age of the children that were in child care at the time the respondents completed the survey was 2.74 years (SD=2.33), with the youngest one (1) month, and the oldest, eight (8) years (N=32). For the six (6) respondents that reported two children in child care at the time of completing the survey, the mean age of the youngest children in child care was approximately 10 and one-half months (SD=.78³), with a range of three (3) months to two (2) years. The mean age of the oldest child in child care, 3.33 years (SD=2.58), with a range of one (1) year to eight (8) years.

For five (5) of the 26 respondents that reported at least one child that was in child care at the time of completing the survey, they had other children less than 18 years of age that were NOT in child care. The mean age of these six (6) children was 5.24 years (SD=3.81), with the youngest, five (5) months⁴, and the oldest, nine (9) years.

The mean number of children reported to be living with the 13 respondents that indicated NOT to have any children in child care at the time they completed the survey was 1.77 children (SD=0.93), with a range of one (1) to four (4) children. The mean age of the children NOT in child care was 4.15 years (SD=4.32), with the youngest, one (1) month, and the oldest, 16 years. For the seven (7) respondents that reported having more than one child living with them and each of the children were NOT in child care, the mean age of the youngest of the children among the respondents was 1.40 years (SD=1.07), with a range of five (5) months to three (3) years. For the seven (7) respondents that reported having more than one child living with them and each of the children were NOT in child care, the mean age of the oldest of the children among the respondents was 7.57 years (SD=6.06), with a range of one (1) year and five (5) months to 16 years.

³ .78 equals approximately nine (9) and one-third months.

⁴ The age of the brother or sister of the child five (5) months old that was NOT in child care was four (4) years.

Respondents were asked to answer the question, “*Do you currently have a need for any of the following types of child care?*” with a “yes” or “no” response for each of the following 10 child care arrangements:

- Half day infant/toddler child care
- Full day infant/toddler child care
- Half day preschool child care
- Full day preschool child care
- Before school child care for school-aged children
- After school child care for school-aged children
- Summer child care for school-aged children
- Child care for school-aged children when there is no school (for example, holidays or teacher in-service)
- Child care when children are sick
- Weekend child care

The mean number of child care arrangement needed by respondents with at least one child less than 18 years of age living with them was 2.05 child care arrangements (SD=2.09), with the minimum zero (0), and the maximum, seven (7). There was a slight variance in the mean number of child care arrangement needed between respondents utilizing child care at the time they completed the survey (**M=2.20, SD=2.00**) and respondents NOT utilizing child care at the time they completed the survey (**M=1.62, SD=2.29**). The percentage of respondents by number of child care arrangement needed among the age ranges is presented in Figure 5. Findings are presented as an aggregated percentage, and by the percentage of respondents utilizing child care at the time they completed the survey and the percentage of respondents NOT utilizing child care at the time they completed the survey.

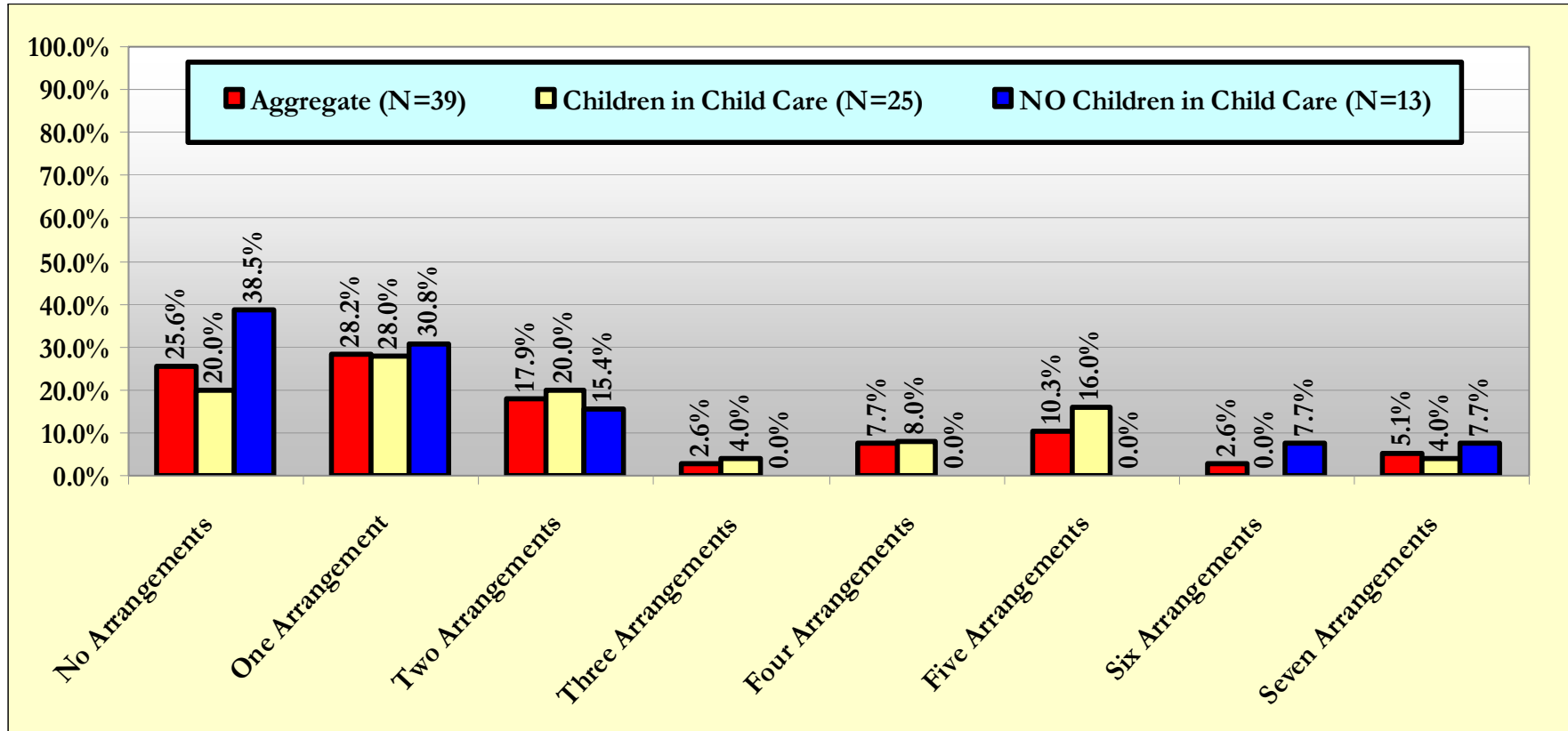


Figure 5: Number of Child Care Arrangement Needed by All Respondents, Respondents Utilizing Child Care, and Respondents NOT Utilizing Child Care

The mean number of child care arrangement needed among respondents with one child less than 18 years of age living with them was 2.09 child care arrangements (SD=2.20), with the minimum zero (0), and the maximum, seven (7). Similarly, the mean number of child care arrangement needed among respondents with two or more children less than 18 years of age living with them was 2.00 child care arrangements (SD=2.00), with the minimum zero (0), and the maximum, seven (7). The percentage of respondents among the number of child care arrangement needed by respondents with one child less than 18 years of age living with them and respondents with two or more children less than 18 years of age living with them is reported in Figure 6.

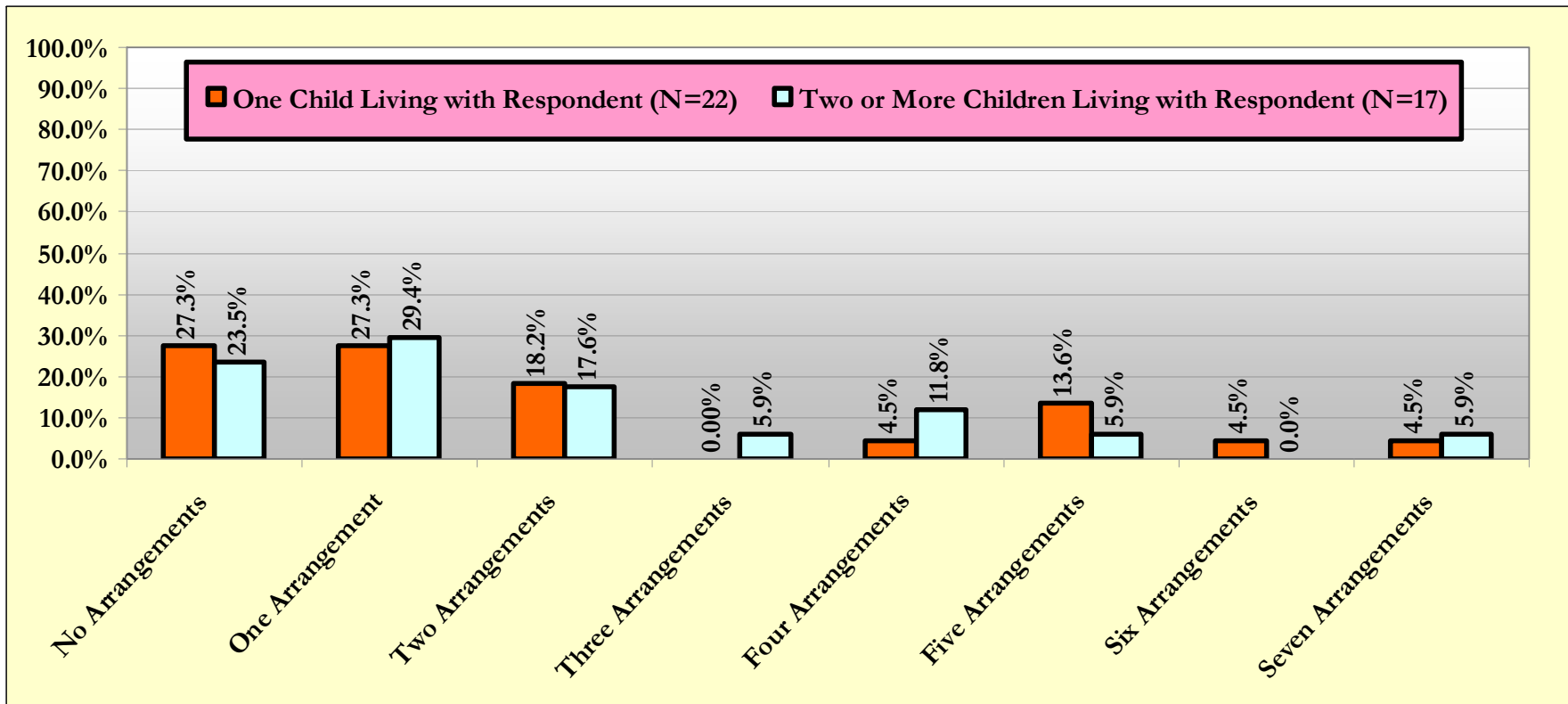


Figure 6: Number of Child Care Arrangement Needed by Respondents with One Child and Respondents with Two or More Children

The percentage of respondents reporting a need for child care for each of the 10 child care arrangements is reported in Table 1. Findings are presented for all respondents, and for respondents utilizing child care at the time they completed the survey and respondents NOT utilizing child care at the time they completed the survey. Additionally, for the top three child care arrangement needed by each of the groupings, the font is in **bold** and the table cell containing the percentage is shaded gray.

Table 1: Child Care Arrangement Needed by Respondents Overall, Respondents Utilizing Child Care, and Respondents NOT Utilizing Child Care

Child Care Arrangement	Aggregate		Children in Child Care		NO Children in Child Care	
	N	Percentage	N	Percentage	N	Percentage
Half day infant/toddler child care	40	27.5%	26	30.8%	13	23.1%
Full day infant/toddler child care	40	37.5%	26	46.2%	13	15.4%
Half day preschool child care	39	10.3%	25	8.0%	13	15.4%
Full day preschool child care	40	17.5%	26	19.2%	13	15.4%
Before school child care for school-aged children	40	7.5%	26	3.8%	13	15.4%
After school child care for school-aged children	40	27.5%	26	34.6%	13	15.4%
Summer child care for school-aged children	40	20.0%	26	19.2%	13	15.4%
Child care for school-aged children when there is no school (for example, holidays or teacher in-service)	40	25.0%	26	26.9%	13	15.4%
Child care when children are sick	40	17.5%	26	19.2%	13	15.4%
Weekend child care	40	15.0%	26	11.5%	13	15.4%

The percentage of respondents reporting a need for child care for each of the 10 child care arrangements is reported in Table 2 by respondents with one child less than 18 years of age living with them and respondents with two or more children less than 18 years of age living with them. Additionally, for the top three child care arrangement needed by each of the groupings, the font is in **bold** and the table cell containing the percentage is shaded gray.

Table 2: Child Care Arrangement Needed by Respondents with One Child and Respondents with Two or More Children

Child Care Arrangement	N	One Child Living with Respondent Percentage	N	Two or More Children Living with Respondent Percentage
Half day infant/toddler child care	22	31.8%	18	22.2%
Full day infant/toddler child care	22	31.8%	18	44.4%
Half day preschool child care	22	9.1%	17	11.8%
Full day preschool child care	22	13.6%	18	22.2%
Before school child care for school-aged children	22	13.6%	18	0.0%
After school child care for school-aged children	22	27.3%	18	27.8%
Summer child care for school-aged children	22	18.2%	18	22.2%
Child care for school-aged children when there is no school (for example, holidays or teacher in-service)	22	18.2%	18	33.3%
Child care when children are sick	22	27.3%	18	5.6%
Weekend child care	22	18.2%	18	11.1%

For those respondents that reported at least one child in child care at the time they completed the survey, or for those respondents that reported NO children in child care at the time they completed the survey AND identified at least one child care arrangement needed, the part(s) of the day these respondents reported needing child care in presented in Figure 7. Findings are reported by the percentage of respondents that reported a need a distinct part of the day: *morning*, *afternoon*, and *evening*; and additionally for the combinations of: *morning and afternoon*, *morning and evening*, *afternoon and evening*, and *morning, afternoon, and evening*.

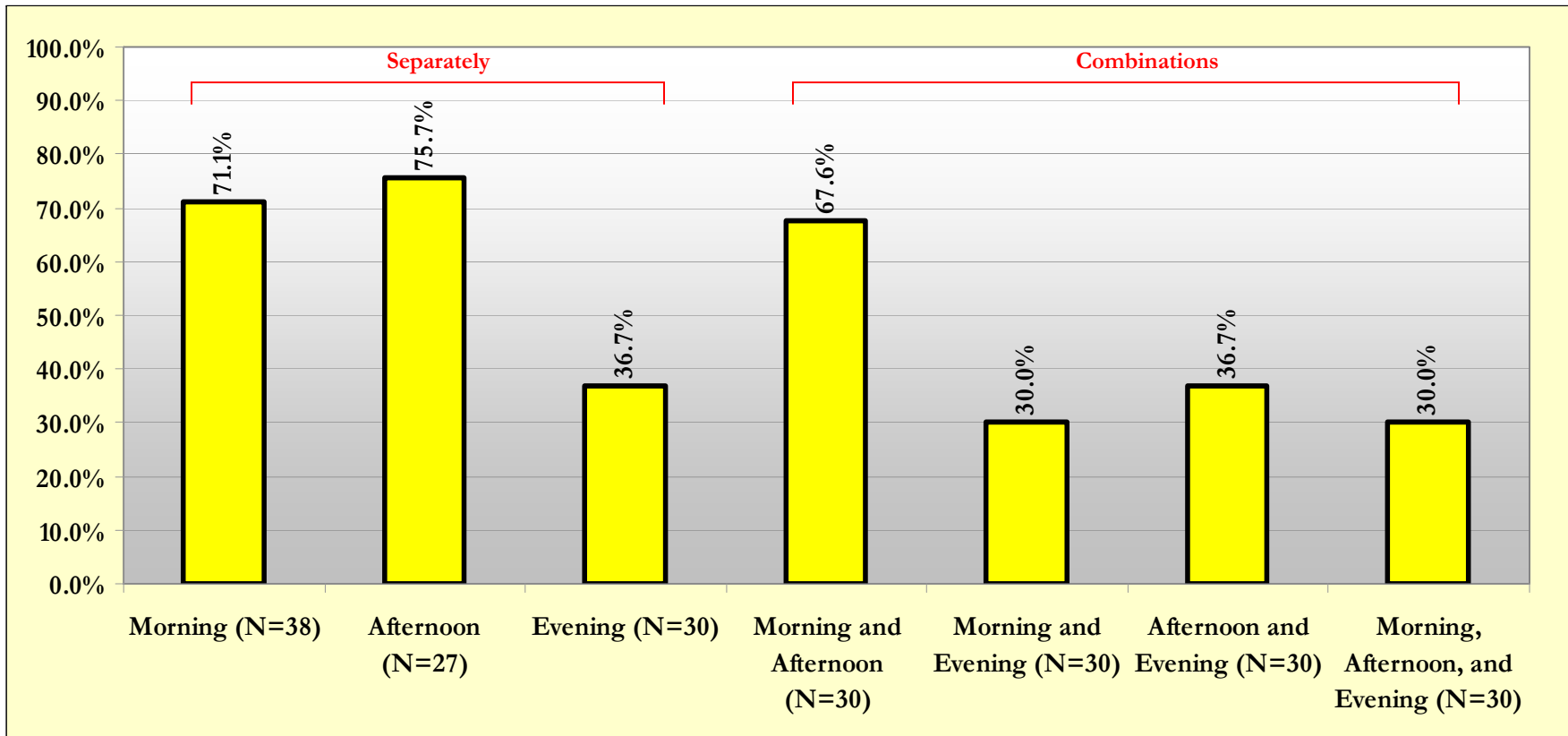


Figure 7: Parts of the Day when Child Care is Needed

For those respondents that reported at least one child in child care at the time they completed the survey, or for those respondents that reported NO children in child care at the time they completed the survey AND identified at least one child care arrangement need, the preferred method of child care is presented in Figure 8.

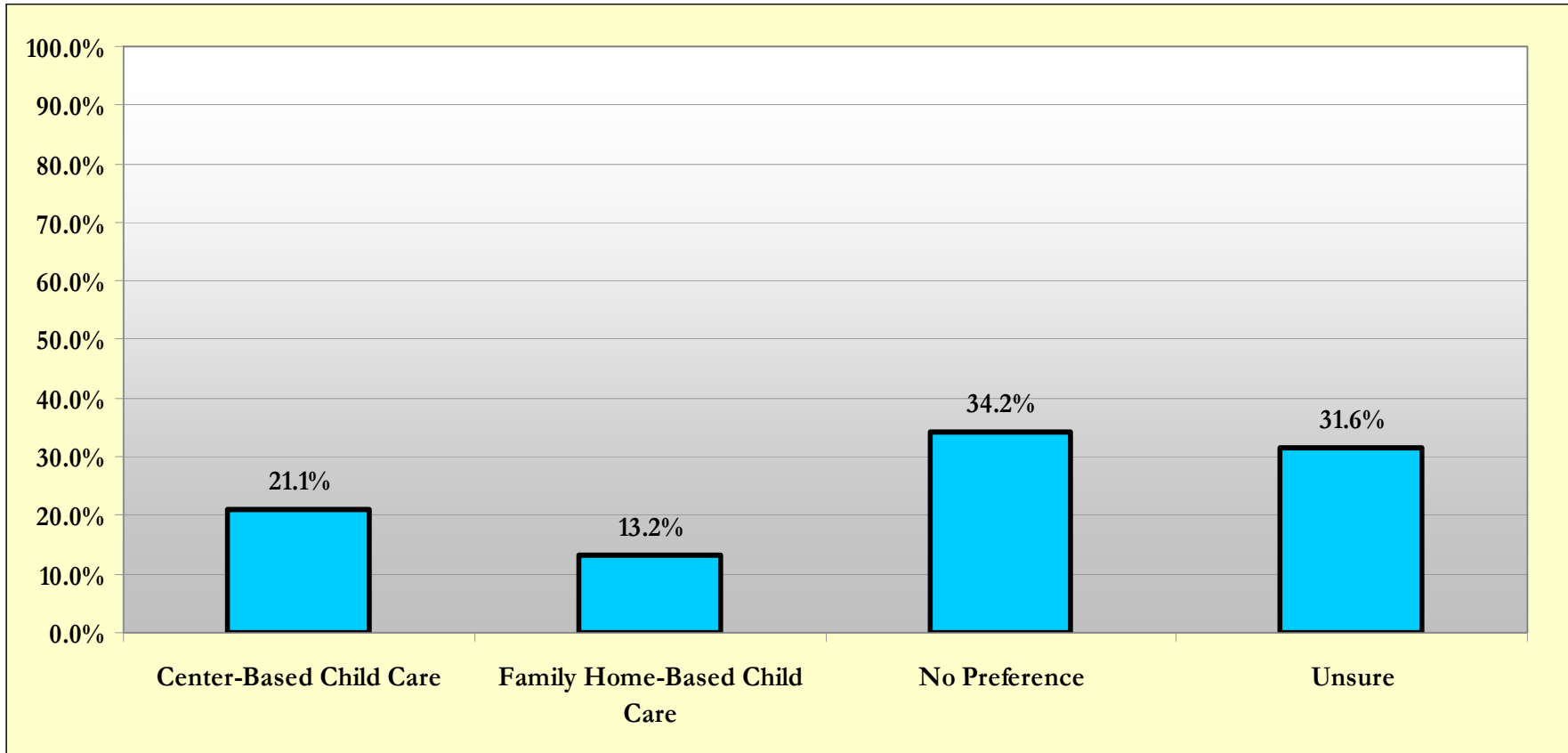


Figure 8: Method of Child Care

Each of the respondents (100.0%) with at least one child age 11 months and younger living with them reported that they would utilize an infant child care program if it were available at the Women’s Center (N=12). Slightly greater than one-quarter (27.1%) of respondents reported that they “planned on” starting a family or expanding their family with the next year (N=59). One-half (50.0%) of the respondents indicated that they would be interested in training to become a child care provider (N=60). Twenty-seven (27) of the 30 respondents that indicated they would be interested in training to become a child care provider responded to the follow-up question, “*If yes, in what type of child care setting would you prefer to have training?*” The distribution of respondents by their choices of *prefer group care training, prefer family child care training, no preference, and unsure* is present in Figure 9.

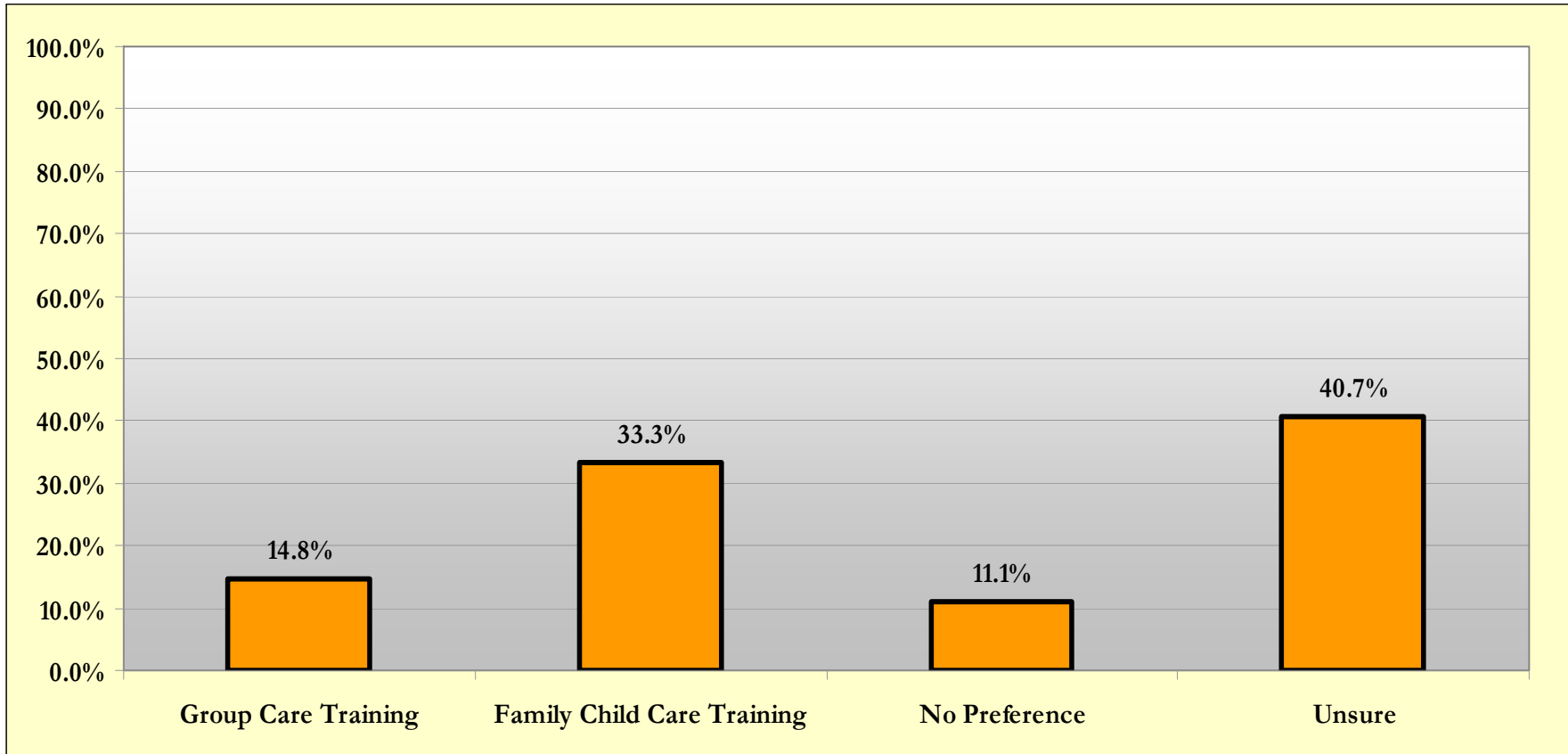


Figure 9: Preferred Child Care Settings for Trainings